



Newsletter 26
Friday 12th April 2013



01926 339138
admin2622@welearn365.com

Sydenham Primary School Newsletter



www.sydenhamprimaryschool.co.uk

Dear parents and carers,

We hope you had an enjoyable Easter holidays.

We would like to thank the PTA for their lovely Easter Egg Treasure Hunt, which they managed to do indoors because of the bad weather at the end of last term. Staff and pupils really enjoyed it and it was a fun way to end the term.

This term we have another busy time ahead of us. The building work has started well and work has also started on some changes inside the school too. A full list of dates will be sent out next week, but here are some key national events for your diaries:

Week beginning Monday 13th May:

KS2 SATs week for pupils in Year 6 (Full timetable to follow)

KS1 SATs for pupils in Year 2 also begin this week and continue the next week to support teacher assessment.

Week beginning Monday 17th June:

Year 1 Phonics screening check takes place this week.

Happily this term is not just about testing and we have events such as a whole school trip, y4 Residential, Sports Days and leavers' assembly to look forward to.

When you get this newsletter Year 5 Miss Glenney, Mrs Chima, Mrs Gough, Miss Crawley and I will have Kipped in a Ship (photos next week!)

Yours sincerely,

Carla Matthews Associate Head teacher



Ofsted
Outstanding
2010|2011

Warwickshire
County Council

Warwickshire
children's
UNIVERSITY



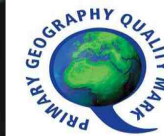
International
School Award
2010-2013



Healthy Schools

Eco-Schools

NATIONAL
GREEN APPLE
ENVIRONMENT
AWARDS
WINNER 2006



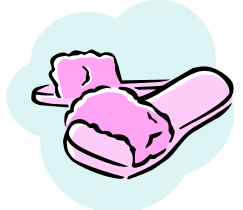
SILVER
2008



Extended
Services
Warwickshire

Quality
Mark





Easter Treasure Hunt

Jack is looking for his name on all the paper eggs. Its a challenge with over 200 children in school!



The teachers had fun too!



Swapping our paper eggs for real chocolate ones was.....delicious!



Nurture Groups

At Sydenham Primary School we currently run two nurture groups; Sunshine Group and Rainbows. The groups are run by Tina Fennelly and Harinder Chima, with help and advice from Nicola Harwood (SENCo), and are just one of the many ways the school supports children with their social, emotional and learning development.

The Sunshine/Rainbow room offers a safe and welcoming environment with familiar adults and regular routines. It provides a place where children can learn and play,



developing self esteem and building confidence whilst learning social skills such as sharing, cooperating and appreciating the feelings of others. All activities are carefully planned and linked to the curriculum and include subject areas such as literacy, history, geography, numeracy, PSHE, science, drama and D&T. The children benefit greatly from the opportunity to work regularly in a small group and 1:1 with an adult.

The children attend the groups for a minimum of half a term, and may return at any time in the future depending on their individual needs. The aim is to enable children to access the curriculum and participate fully in school life.

Sunshine group and Rainbows are extremely popular with the children and they respond very well to the support that is offered. Many of the children have maintained the close relationships they formed with the adults whilst in the group and are always asking if they can come back!

If you require any more information about Sunshine Group or Rainbows please contact Nicola Harwood, Tina Fennelly or Harinder Chima at school.

