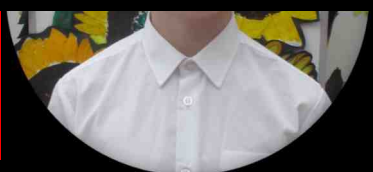


Arts' Ambassadors



happen this July in Jepson Gardens. This free, community event will showcase the work of pupils and professional artists and looks set to be a fun-filled day full of top quality entertainment and activities.

On Tuesday, the children attended a session at Lopham Terrace Primary School where they met staff from Warwick Arts' Centre who are helping them to plan the event. Keep up the good work, Ambassadors!



Girls' Football



On Thursday, our girls' football team travelled to a snowy Bedworth United Football Club to take part in the county 7-a-side finals. The girls were playing against teams from Rugby, Nuneaton, Stratford and Bedworth. Despite the cold weather and early start, the team did amazingly well, coming fifth and scoring three goals.



Wellbeing



At Sydenham Primary School we currently have a number of different nurture groups; Sunshine Nurture Group, Rainbows Nurture Group and Sunshine Art Group. Sunshine Nurture Group runs for two sessions each week, one for KS1 children and one for KS2 children and Rainbows Nurture Group runs for three afternoons. Sunshine Art Group takes place once per week and we run two groups for KS2 children and one group for children from KS1. The groups are run by qualified Nurture Practitioners Tina Fennelly and Lorna Ashworth, with help and advice from Jill Manley (SENDCo). They are just one of the many ways the school supports children with their social, emotional and learning development.

All groups take place in the Nurture Room which offers a safe and welcoming environment with familiar adults and regular routines. It provides a place where children can learn and play, developing self esteem and building confidence whilst learning social skills such as sharing, cooperating and understanding the feelings of others. Children learn to manage their feelings and develop their resilience. All activities are carefully planned and linked to the curriculum and include subject areas such as literacy, history, geography, numeracy, PSHE, science, art, drama and D&T. The children benefit greatly from the opportunity to work regularly in a small group and 1:1 with an adult.

The children attend the groups for a minimum of half a term, and may return at any time in the future depending on their individual needs.

All of our nurture groups are extremely popular with the children and they respond very well to the support that is offered. Many of the children have maintained the close relationships they formed with the adults whilst in the group and are always asking if they can come back!

If you require any more information about any of our Nurture Groups please contact Jill Manley, Tina Fennelly or Lorna Ashworth at school.

Nurture in School



UN Convention on the Rights of the Child

Article 6: Life, Survival and Development



Pupil Voice

At Sydenham, we believe that it is important to give children special roles and responsibilities around school. This teaches them valuable “soft skills” such as good communication, decision making, team work and cooperation. All of these skills are essential for life.

During the Spring Term, the Y6 pupils below will be taking on the special role of prefect. Their jobs include helping in the school office, setting up for assembly and collective worship, taking responsibility for the playground equipment, mediating problems at break time and helping to supervise younger children during the lunch hour.

We expect our prefects to act as excellent role models for others around them and feel confident that they will all do a fantastic job.



UN Convention on the Rights of the Child

Article 12: Respect for the Views of the Child.

The Book Bus

The Book Bus will be visiting us on March 6th.

The Book Bus stocks over **250 books** plus an extensive range of gifts, toys and stationery. So finding the perfect books has never been easier. And, you won't just find children's books on the Book Bus, there's plenty of choice for parents, teachers and staff too – all at amazing prices.

Plus, the Book Bus takes **cash or any major debit or credit cards**, so your Book Bus visitors will be able to leave with their purchases on the day!

You can visit the Book Bus either before or after school with your child. To avoid over crowding on the bus you can also take your child to the bus at the following times:

YR	Between 9.15am and 10.15am
Y1	Between 10.15am and 11.15am
Y2	Between 11.15am and 12.15pm
Y3/4	Between 1.15pm and 2.15pm
Y5/6	Between 2.15pm and 3.15pm

(Please note that children are not allowed on the bus unless supervised by a parent/carer.)

To find out more, visit: www.thebookpeople.co.uk/



Pupil Achievements

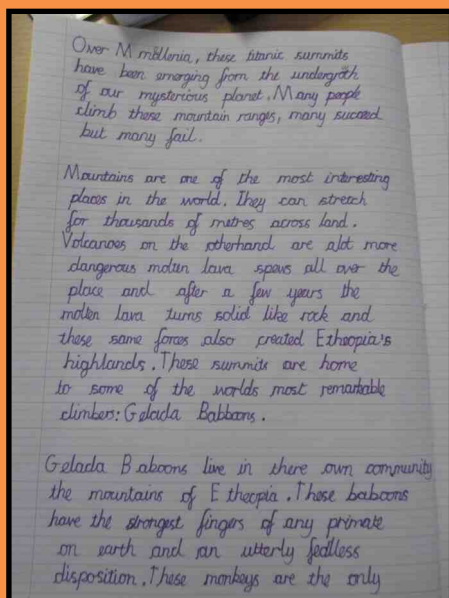


Anshika received a silver Blue Peter badge for writing a lovely poem. This is Anshika's second badge.



Raisan made an incredibly realistic model of an African village for home learning. She used a range of materials including clay, leaves, paper and paint.

Shri produced a very professional Powerpoint Presentation about endangered animals for home learning. She chose the rhinoceros as a focus and created a presentation that included animations and a commentary voiced by Shri herself! Mr Hawes was very impressed by the level of research undertaken and the expressive way Shri delivered her commentary.



Y6 JB and Y6 KC produced top quality documentary writing on the theme of mountains in their Literacy lessons this week.



Evie and Tyler wrote to David Walliams to tell him of their ambition to be actors. He sent back a personalised reply and a signed photograph.

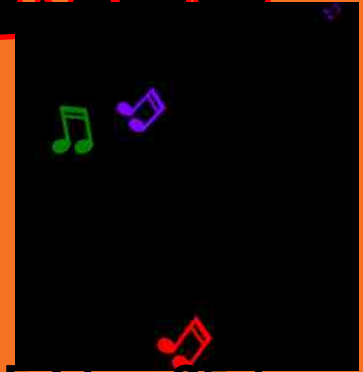
UN Convention on the Rights of the Child

Article 29: Goals of Education.





PTA Disco



**The PTA disco will be held on Friday 25th
January 2019.**

Tickets will be on sale for the final time on Monday 21st January in the hall at 3.20pm. Alternatively, please put the correct cash in a named, sealed envelope stating your child's class and hand it in to the office. The PTA will then tick your child's name off on their class admission list.

The timings are as follows:

YR	2.45—3.30pm
Y1 and Y2	3.45—4.45pm
Y3 and Y4	5.00—6.00pm
Y5 and Y6	6.15—7.15pm

This will be a MUFTI (non-uniform) Day so younger children can come to school wearing their disco clothes if they wish, providing they are warm and suitable for the playground. Older pupils might wish to change in to their disco wear at home.

Safeguarding

We have been asked by the Local Authority to share the following information with you regarding safeguarding:

As promoted by Warwickshire Safeguarding Children Board's Taking Care Scheme please **do not** teach blanket 'stranger danger' messages to children. The reason for this is that sometimes a stranger is the only person who can help us and is a far safer option than not talking to anyone. E.g. a child lost in a shop is far safer to tell a stranger they are lost than to wander off looking for the person they have separated from. We may choose to discuss the likely 'safest' strangers in such scenarios such as a mother with a pram or small children or someone who works in the shop.

However, we do need to clarify the stranger issue as plainly there are situations we may want to warn children about for their own safety e.g.

- Not to get in a car with anyone (NOT just someone they don't know) unless their parent/guardian knows who/ where/ when etc and has given permission.
- Not leaving school with someone other than who they were expecting unless their parent/guardian knows who/ where/ when etc and has given permission and they have checked with a school staff member. Sometimes a password system is used so that children are only released into the care of an adult who can give the correct password – this is usually changed as soon as it has been used once.
- Not to walk off with anyone (NOT just someone they don't know) unless their parent/guardian knows who/ where/ when etc and has given permission.
- If someone tries to grab them it is ok to break all the rules of politeness to others e.g. scream, kick, punch, bite...etc. Whatever they need to do to draw attention to themselves and alert others to the fact they are in danger.



COMMUNITY POWERED
ADVOCACY SERVICE

Feeling vulnerable, isolated or know someone who is?

Not sure where to turn?

Our Community Powered Advocacy Workers
are here to help.

We help find solutions to today's problems, build capacity to deal with what might come tomorrow, and help develop future connections and friendships.

Complete a referral form (for yourself or on behalf of someone else) or email Naomi Madden to discuss eligibility at

nbaker@grapevinecovandwarks.org

grapevine

COMMUNITY POWERED
ADVOCACY SERVICE

Feeling vulnerable, isolated or know someone who is?

Not sure where to turn?

Our community Powered Advocacy Workers
are here to help.



Community Powered Advocacy

For people over the age of 18 with a
Vulnerability living in Warwickshire who
don't use formal services or receive
support from social care.

How can I join in?

Complete your details on this sheet and
someone from the team will get back to
you

☐

I am aged 18 or over

☐

I would like to refer myself
to this project

☐

I consent to giving my name
and address to Grapevine
so they can contact me
about the project

☐

Grapevine must keep
my information safe and
not share with anyone else.

Name:

Address:

.....post code

Tel.



Well done to Y3 AH and Y5 JvS who had the highest attendance at school this week with 99% of pupils attending.

Attendance for other classes this week was as follows:

Y2 KG	98%
Y6 KS	98%
YR AH	97%
Y4 KJ	97%
Y2 AP	96%
Y3 JM	96%
Y6 JB	96%
Y1 EL	93%
Y4 CD	93%
Y5 CB	89%
YR RK	89%
Y1 JL	87%

Please note that our school attendance target is 97%.

The minimum acceptable attendance, as stipulated by Warwickshire Local Authority, is 95%.

Low attendance results in poorer educational progress and attainment.

Spring Term Diary Dates

Thursday 24th January 2019

Friday 25th January 2019

Friday January 25th 2019

Tuesday 29th January 2019

Tuesday 29th January 2019

Tuesday 29th January 2019

Tuesday 5th February 2019

Wednesday 6th February 2019

Tuesday 12th February 2019

School closed for staff training.

PTA disco. Tickets on sale after school.

MUFTI (non uniform) Day. Bring a 50p donation.

Y4 KJ class assembly at 9.15am.

Skip 2B Fit workshops for all classes.

African Choir Concert, 7.00pm at The Spa Centre.

Y1 EL class assembly at 10.15am.

Y3 visit to the Warwick University Nature Trail.

Y4 CD class assembly at 9.15am.

Half-term holiday from Monday 18th February—Friday 22nd February 2019

Tuesday 26th February 2019

Wednesday 27th February 2019

Friday 1st March 2019

Tuesday 5th March 2019

Wednesday 6th March 2019

Friday 7th March 2019

Tuesday 12th March 2019

Monday 18th March 2019

Tuesday 19th March 2019

Friday 22nd March 2019

Monday 25th March 2019

Monday 25th March 2019

Tuesday 26th March 2019

Wednesday 3rd April 2019

Thursday 4th April 2019

Monday 8th April 2019

Monday 8th April 2019

Tuesday 9th April 2019

Y3 AH class assembly at 9.15am.

Y3 SPLAT! art project with Juneau Projects begins.

Year 3 Viking Day.

YR RK class assembly at 10.15am.

Book Bus visits school.

World Book Day.

Y3 JM class assembly at 9.15am.

L2 Bikeability course starts (Y5/6.)

YR AH class assembly at 10.15am.

L1 Bikeability Course (Y3/4.)

Scooter Wise sessions for Y1—Y4.

Y6 JB visit Campion School for a cookery lesson.

Y5 CB class assembly at 9.15am.

Parent's Evening, 3.30—7.00pm.

Parent's Evening, 3.30—5.30pm.

Rocksteady concert at 2.00pm.

Y6 KS visit Campion School for a cookery lesson.

Y5 JvS class assembly at 9.15am.

Easter holiday from Monday 15th April –Friday 26th April 2019

Please note that school is closed on January 24th for staff training. Educational Researcher, Shirley Clarke, will be visiting Sydenham to deliver training on formative assessment and the use of growth mindset strategies to help ensure all pupils achieve their potential.

Sydenham Super Stars!



Sydenham Super Stars!



See you all on Monday.

Best wishes from Miss Glenny and Miss Challand