

# Year 6 Evacuees



Year 6 stepped back in time this week with a trip to Winchcombe Railway, dressing up as 1940s evacuees to experience what life might have been like for children during the Second World War. The day included travelling on a steam train and taking part in activities that brought to life the challenges and emotions faced by evacuees.



Convention on the Rights of the Child

Article 29: Goals of Education







# Year 6 Evacuees



At the station, the children were met by a guide who explained why they needed to be evacuated to the safety of the countryside. Afterwards, the children learnt important safety skills including how to put out incendiary bombs using a stirrup pump and what to do in an air raid. When the siren sounded, everyone rushed to the air raid shelter and waited for the all-clear.





# Year 6 Evacuees





# Year 6 Evacuees



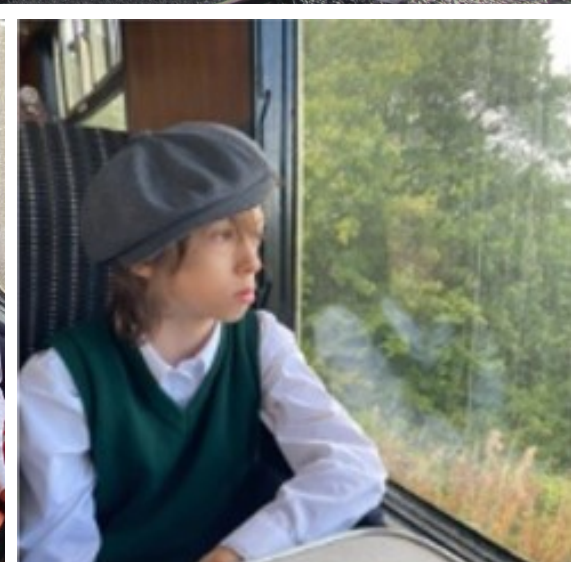
The children met Miss Wilson, Headteacher at the village school. She shared information about safety during the blackout, Make Do and Mend and Grow Your Own. The children also learnt about the role of the local Air Raid Warden and how to make their weekly rations go further with ingenious recipes (including using mashed parsnips and sugar as an alternative to bananas!) Afterwards, the children boarded a steam train and rode towards their new "homes" in the local village.

This memorable visit linked directly to the history curriculum, deepening pupils' understanding of the Home Front and the impact of evacuation on families during the war.





# Year 6 Evacuees







Y1 have been enjoying Julia Donaldson's book, "The Paper Dolls." In response, the children read and followed instructions explaining how to make paper dolls. There was some tricky folding and cutting but the results were very exciting!



**Convention on the Rights of the Child**  
**Article 29: Goals of Education**



colour



fold



cut



adventure



paper



dolls





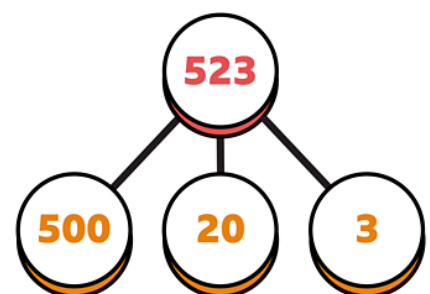
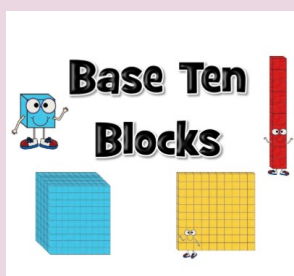
This week, Year 3 have been working collaboratively to partition 3-digit numbers using part-whole models and base 10 resources.

PIC•COLLAGE

A **part-whole model** is a diagram used in mathematics to show how a whole quantity or number is made up of its individual parts, helping to understand the relationship between the whole and its components.

This pictorial representation supports learning addition and subtraction by visualising how amounts can be combined or partitioned into smaller pieces, forming a strong foundation for more complex math concepts.

Base 10 resources are physical manipulatives (rods, flats and cubes) which represent thousands, hundreds, tens and ones.







# Reception Woodwork

This week, the woodwork area in the Reception outdoor classroom has been open. Staff have taught the children how to handle the tools correctly and use appropriate safety equipment.

Woodwork enables children to make their own choices and to learn through trial and error. It also sparks creative thinking and imagination and supports supporting scientific investigation, physical coordination, language, and vocabulary. In addition, the skills pupils learn in the woodwork area will help develop their fine motor skills and build the muscles for early writing.



**Convention on the Rights of the Child**  
**Article 29: Goals of Education**





During Rainbows Group pupils explored different resources to paint pictures. The children used sponges, shaving foam mixed with food colouring, fruits and vegetables. The children had fun using the resources creatively and produced some lovely artwork.



# Perfect Printing



**Convention on the Rights of the Child**  
**Article 29: Goals of Education**





# Y2 Map Making



This week, the Year 2 children visited Forest School and collected a wonderful variety of natural materials, including sticks, leaves, feathers, and more. Using these resources, they created visual maps to represent different areas they might explore. The children then used their creations to think about possible habitats for animals and insects. It was fantastic to see them working so well together, showing great teamwork and creativity both outdoors and back in the classroom.

Forest School is an outdoor, child-centred learning approach that encourages exploration, problem-solving, and teamwork in a natural environment. It provides children with hands-on experiences that build confidence, creativity, and a deeper connection with nature.



**Convention on the Rights of the Child**

**Article 29: Goals of Education**



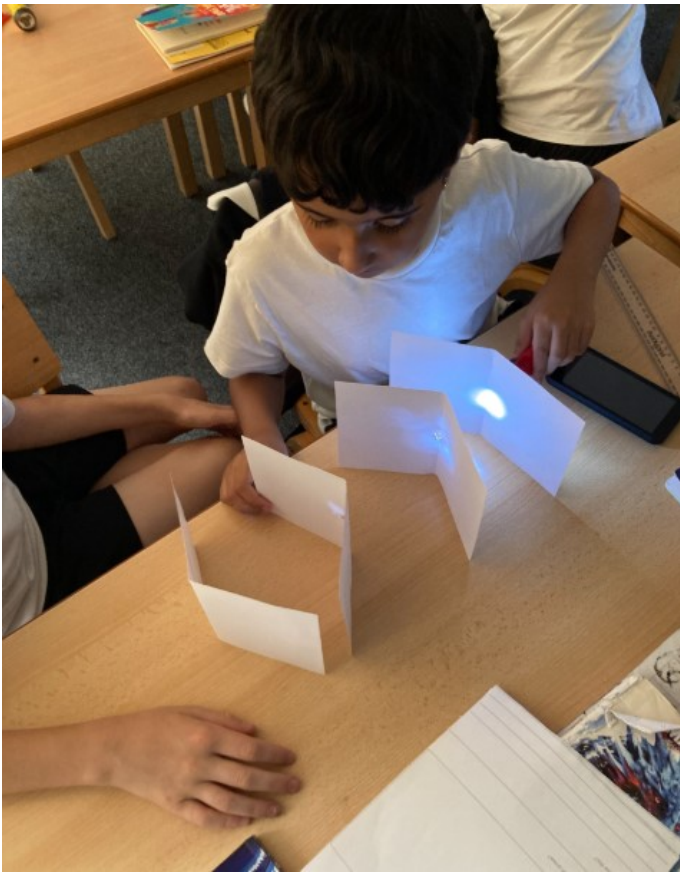
This week in science, Year Five revised their knowledge of forces and explored gravity in more depth. They experimented with pull force in a tug of war and explored how gravity acts on different objects. Did you know that two identical bottles will fall at the same rate even if one is full and one is empty? This surprised year five and led to some really interesting discussions! Finally, the children sorted facts into true and false and explained their reasons for the choices they made



# Y5 Physics







In science, Year 6 carried out an investigation to prove that light travels in straight lines. Using torches and cards with holes cut into them, they discovered that the light only shone through when all the holes were lined up. This hands-on experiment, linked to the science curriculum, helped pupils understand how light moves and why shadows are formed



# Year 6 See the Light



Convention on the Rights of the Child  
Article 29: Goals of Education





# KS1 Woodwork Club



**Convention on the Rights of the Child**  
**Article 15: Freedom of Association**

Children in Years 1 and 2 have been busy in Woodwork Club, learning how to safely use saws and hand drills to create their own wooden wind chimes. This exciting project links to the Design and Technology curriculum, giving pupils the chance to develop practical skills, work with tools, and design a finished product they can be proud of. The children showed great focus and creativity, and can't wait to hear their wind chimes tinkling in the breeze!





# Going For Goals

In assembly this week we have been thinking about being ambitious and “Going for Goals,” so it was wonderful to hear that Alexandra and Sadie have done just that over the Summer holidays.

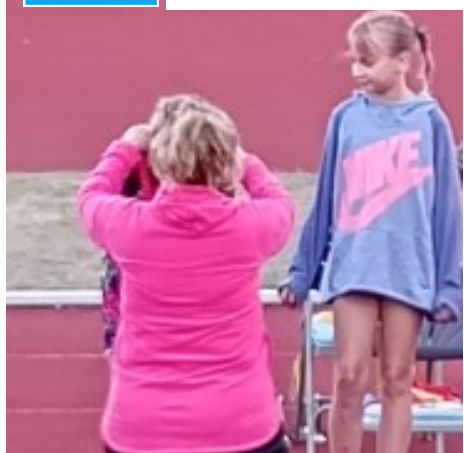
Alexandra has a great passion for football and has been signed by Leicester City! Alexandra also plays for Rugby Borough FC Women so she trains hard and is dedicated to improving her skills. Well done, Alex.

Sadie is an up and coming athlete who won gold in a long jump competition held in Rugby. She aspires to be a heptathlete in the future because she enjoys a variety of events. Congratulations, Sadie, and keep up the hard work.



**Convention on the Rights of the Child**

**Article 15: Freedom of Association**







# DYSLEXIA COVENTRY

*Supporting children and families in Coventry, Warwickshire,  
Leicestershire and beyond!*



**Sarah Grainger - Contact me today**  
Teacher since 2001  
SENDCO since 2011  
Dyslexia Specialist Teacher

**£425 - £475 per assessment**  
See website for details  
Assessment and report completed  
within 1 week



<https://dyslexiacoventry.co.uk>



[dyslexia.coventry@gmail.com](mailto:dyslexia.coventry@gmail.com)



07368 533607



# Harvest appeal

**We are supporting Warwick District Foodbank by collecting the items listed below. If you would like to donate something, please leave it with a member of our office staff, week beginning Monday 22nd September.**

## Help support your food bank this Harvest

In the three weeks leading up to Harvest, the food bank will provide over 150 food parcels for local individuals and families facing hardship.

### Donate food



Donate an item or two from our shopping list, ensuring we can provide food for people facing hardship in your community.

### Donate money



Help to cover the costs of storing and distributing food, as well as developing sustainable projects.

## Shopping list

Tinned fruit

Tinned peas/carrots

Tinned sweetcorn

Rice pudding

Crisps

Shaving gel & razors

Shower gel

Toothpaste

Washing up liquid

Laundry capsules

[info@warwickdistrict.foodbank.org.uk](mailto:info@warwickdistrict.foodbank.org.uk)  
[warwickdistrict.foodbank.org.uk](http://warwickdistrict.foodbank.org.uk)

Registered Charity in England & Wales (1160705)





# Diary Dates

Tuesday 16th September	Y5 Tudors trip to Sulgrave Manor.
Thursday 18th September	School photographer—individual portraits.
Wednesday 24th/Thursday 25th September	Y5/6 Level 2 Bikeability.
Thursday 25th September at 9.05am	<b>Y1 Harvest Festival</b> —parents and carers of children in this year group are warmly invited to attend.
Friday 26th September	MUFTI (non-uniform) Day—make a donation of £1.00 to School Fund via ParentPay if your child wears their own choice of clothes.
Tuesday 30th September at 9.00am.	<b>Y6 Swans</b> class assembly—parents and carers of children in this class are warmly invited to attend.
Tuesday 7th October at 9.00am.	<b>Y6 Moorhens</b> class assembly—parents and carers of children in this class are warmly invited to attend.
Thursday 9th October	MUFTI (non uniform) Day—wear blue for World Mental Health Day.
Thursday 9th October	YR and Y6 height and weight checks.
Thursday 9th October	Y6 Health Needs Assessment.
Friday 10th October	<b>School closed</b> for In-Service Training (INSET)
Tuesday 14th October at 10.15am	<b>Y1 Puffins</b> class assembly—parents and carers of children in this class are warmly invited to attend.
Tuesday 21st October at 10.15am.	<b>Y1 Kingfishers</b> class assembly—parents and carers of children in this class are warmly invited to attend.
Friday 24th October	MUFTI (non-uniform) Day—make a donation of £1.00 to School Fund via ParentPay if your child wears their own choice of clothes.
Wednesday 22nd (3.30—7.00pm) and Thursday 23rd October (3.30—5.30pm)	Parent's Evening
Friday 24th October	MUFTI (non-uniform) Day—make a donation of £1.00 to School Fund via ParentPay if your child wears their own choice of clothes.



**Monday 27th —Friday 31st October, school closed for the half-term holiday.**

**Pupils return to school on Monday 3rd November.**

Tuesday 4th November at 9.00am	<b>Y5 Woodpeckers</b> class assembly—parents and carers of children in this class are warmly invited to attend.
Tuesday 18th November at 9.00am	<b>Y5 Kittiwakes</b> class assembly—parents and carers of children in this class are warmly invited to attend.
Wednesday 26th November	Y3/4 trip to The Belgrade Theatre to watch “Sleeping Beauty.”
Friday 28th November	MUFTI (non-uniform) Day—make a donation of £1.00 to School Fund via ParentPay if your child wears their own choice of clothes.
Monday 1st December	<b>School closed</b> for In-Service Training (INSET.)
Wednesday 3rd December	Reception, Year One and Year Two trip to Warwick Arts Centre to watch “The Tiger Who Came to Tea.”
Tuesday 9th December at 2.15pm	<b>Y4 Carol Concert.</b> Parents and carers of children in this year group are warmly invited to attend.
Thursday 4th December at 9.30am.	<b>Y1 Carol Concert</b> —parents and carers of children in this year group are warmly invited to attend.
Monday 8th December at 9.30am	<b>Y2 Carol Concert</b> —parents and carers of children in this year group are warmly invited to attend.
Tuesday 9th December at 9.30am	<b>Y3 Carol Concert</b> —parents and carers of children in this year group are warmly invited to attend.
Wednesday 10th December at 9.30am	<b>Y5 Carol Concert</b> — parents and carers of children in this year group are warmly invited to attend.
Thursday 11th December at 2.15pm	<b>Y6 Carol Concert</b> —parents and carers of children in this year group are warmly invited to attend.
Tuesday 16th December	Christmas lunch.
Wednesday 17th December	<b>YR Nativity</b> (new date.) Parents and carers of children in this year group are warmly invited to attend.
Wednesday 17th December	MUFTI—wear a Christmas jumper or festive outfit and donate £1.00 to School Fund via ParentPay.

**Monday 22nd December—Friday 2nd January, school closed for Christmas holiday.**

**Pupils return to school on Monday 5th January**





# Sydenham Superstars



## YR and Key Stage One

Have a super weekend.

Best wishes from Miss  
Glenny



## Key Stage Two